

NEW and RESALE homes

WATERLOO REGION RECORD

Saturday, May 8, 2010

SECTION H

House sales hit new high H4 Decora Homes - Paris H10
Debbie Travis H6 Mortgage rates H17
A Special Advertising Feature



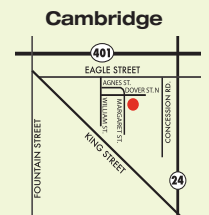
Aberdeen Homes – Riverwood – See H8



NEW RELEASE Priced from **\$221,900.**
\$5000 Cash Back*

YES YOU CAN BUY YOUR FIRST HOME!
Townhomes from the low \$200's

*Limited time offer; Restrictions apply. Prices and specifications subject to change. See sales representatives for more details. E. & O. E. Rendering is artist's concept.



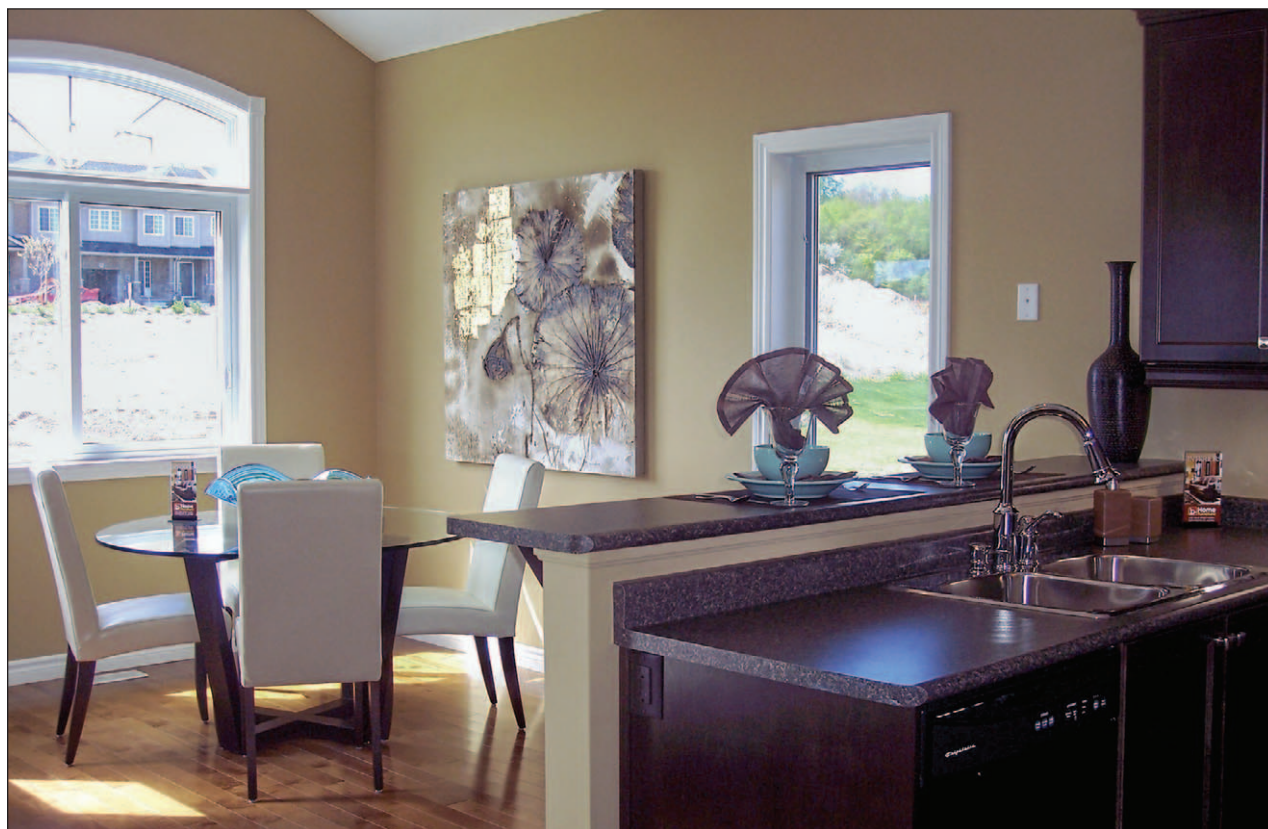
Mon - Wed 2 pm - 7 pm
Sat & Sun 12 noon - 5 pm

Register Today
reidsheritagehomes.com 519.653.1506



BUILDER OF THE WEEK – ABERDEEN HOMES – RIVERWOOD

Builder celebrates opening of new single-detached design



Today's unveiling of Aberdeen Homes' new model in Kitchener's Riverwood promises more than a lovely home. It presents an opportunity to meet the people who built it and those who have already purchased a home from the family-based builder.

Says Aberdeen Homes' managing partner, Nathan Hallman, of the Springdale's grand opening taking place from 1 to 5 p.m. today: "We invited the trades and suppliers – everyone who had a hand in building this home – as well as our past clients to stop by for a tour and a barbecue. We're also expecting the neighbours (of the model) to come out. So basically, you'll be able to meet the people who build or live in our homes."

Located at 1259 Old Zeller Drive on a 30-foot lot, the



DAINA FEICK
HOME OF
THE WEEK

Aberdeen Homes unveils its new Springdale model home today at a Grand Opening in its Riverwood community off Zeller Drive. The family friendly three-bedroom Springdale offers 1,578 square feet of two-storey comfort, plus the Grand Opening gives buyers an opportunity to meet the people behind Aberdeen Homes, a family business with a long and enviable home building record in Waterloo Region.

1,578 square foot Springdale is a family-friendly, two-storey, three-bedroom plan based on a former design known as the Trent.

"The Springdale is a larger version of the Trent. We bumped up the room sizes and enhanced the overall layout. We're very excited about it."

Among the model's exterior highlights (all of which are included in every home) are quality clay brick around the entire main floor, premium vinyl siding, maintenance-free aluminum soffits, fascia, eavestroughs and down spouts, and high-efficiency, low-E vinyl-clad windows. Architectural appeal is ensured via covered porches with columns, steep roof pitches and varying window sizes. The model's single car garage measures 12 by 20 feet and includes a side door.

Sidelights and a transom frame the front door entry

which leads to a thoughtfully designed main floor inclusive of both standard features and upgrades.

"The nine-foot ceilings are standard," observes Hallman.

So are the inviting, open-concept layout of the living room, kitchen and dinette ("the higher ceilings and large windows really create that airiness that a lot of people like"), the kitchen's handy L-shaped configuration and double stainless steel sink, a garden door in the dinette, the master bedroom's walk-in closet and three-piece ensuite and the secondary bedrooms' ample size. One of those bedrooms also includes a walk-in closet.

Upgrades – all worthy of serious consideration – include the foyer's ceramic flooring, gorgeous hardwood throughout much of the main floor, numerous potlights, the dinette's sloped ceiling, a raised breakfast bar and the

CONTINUED ON H15

ABERDEEN HOMES – RIVERWOOD – CONTINUED FROM H8

master's coffered ceiling.

Also appealing are the Springdale's sunken powder room and guest closet, maple kitchen cabinetry with crown moulding and under-cabinet lighting, an oak railing to the bedroom level and a four-piece upstairs bath.

"Some people have already had a 'sneak peak' of the model and the feedback has been great so we're definitely looking forward to the official opening," shares Hallman.

Other Aberdeen plans available in Riverwood include the 1,376-square-foot St. Clair, the 1,545-square-foot Grand, the Avon as well as the Rideau with 1,670 and 1,684 square feet, respectively. All are two-storey, three-bedroom designs with predominantly open concept main floor layouts. Each home offers two options regarding exterior elevation. In the Avon, homebuyers can also expect a main floor laundry while, in the Rideau, a second

floor family room is an added bonus.

Hallman also affirms a free refrigerator, stove, dishwasher and over the range microwave in each home, one year of free Rogers phone, television and hi-speed internet services and Riverwood's many advantages.

"This is a great area. It's steps away from the Grand River and the Walter Bean Trail. It's close to area malls. Lackner Woods Public School is right down the road and a new Catholic School in the works. The amenities – both man-made and natural – are excellent."

For more information about Riverwood by Aberdeen Homes, an ideal opportunity for first-time purchasers, move-up buyers and

growing families and currently in its second phase of development:

- Call David Gardner of Re/Max Twin City Realty Inc., Brokerage, at 519-885-0200

- Stop by the Springdale model at 1259 Old Zeller Drive (off Zeller Drive), Kitchener, during open house hours, Saturday and Sunday, 1 to 5 p.m.

- Visit www.aberdeenhomes.ca

Prices start at \$286,350; most lots measure 30-feet wide.

Interested in a quality-built freehold townhome? Ask about the Enclave at Riverwood, a nearby limited collection of freehold towns by Aberdeen Homes starting at just \$232,600.



Beautiful, luxury condominiums in Breslau



The Tisbury
1,622 sq. ft.

The Madaket 1
1,508 sq. ft.

The Madaket 2
1,601 sq. ft.

The Nantucket
1,790 sq. ft.

A Spectacular enclave of open concept condo's tucked away in Waterloo Region's premier community. Gorgeous designs all with 2 car garages. Some with main floor master bedroom suites.

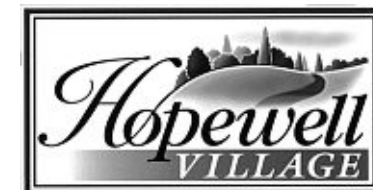
Starting from

\$261,900

Open House Sat. & Sun., 1-5 p.m.

We're a little different, our models are virtually standard. Come and see what you're really getting for your money.

Corner of Fountain St. N. and Townsend Drive, Breslau



Thomasfield Homes Limited
Style and Quality for 30 Years



PETER BENNINGER
REALTY
BROKERAGE

DEAN WIDDIFIELD
Sales Representative

519-742-5800
ext.2375



Realty Ltd., Brokerage

MARK WHITNEY
Sales Representative

CIRO GUCCIARDI
Sales Representative

519-747-0231

Kenmore
HOMES

A Legacy of Fine Homes Since 1955

Presents...



Luxury Town Homes starting at \$244,900

- 4 Decorated models to view
- Close to schools, shopping & Restaurants
- Late summer/early fall possessions still available
- Close to parks/walking trails



Open House Hours
Sat & Sun 1-4:30

OR
Contact

Rob Halter
Sales Representative
M. Machel & Assoc. Ltd.
Brokerage
519 - 496 - 5885



FOOT 684602

FOOT 676989

www.thomasfieldhomes.com